

Multi Lab Clave CLG series

A premium model with a cycle similar to the steam-flush pressure-pulse (SFPP) for sterilizing challenging loads.



CLG-32L

Incorporates the parts not easily deteriorate over time

To avoid a running cost piling up due to the parts easily deteriorate over time, incorporates the lid gasket with steam resistant, the heater element made of stainless steel etc. so the parts last long time.

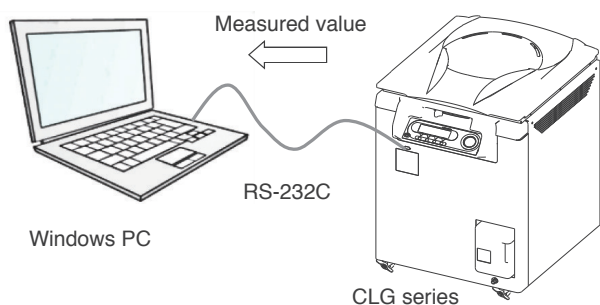
Rapid cooling fan as standard

Cools the loads after cycle to shorten the time until unloading.

Data logging system (Option)

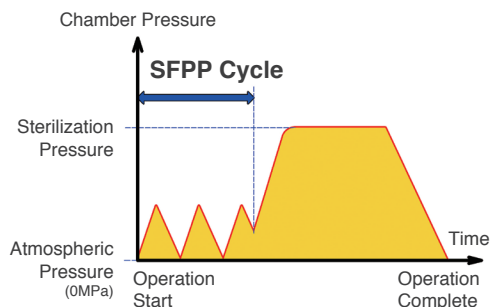
You can take the temperature, pressure, and time during operation into an optional software "ALP-LOGGER" by connecting between the unit and a PC.

The data are showed "Temperature (Pressure) - Time" diagram, can be printed, and exported to Microsoft Excel®.



Steam-flush pressure-pulse (SFPP)

Removes air from the load rapidly by repeatedly alternating a steam flush and a pressure pulse above atmospheric pressure. Optimum to sterilize challenging loads.



Available in plenty programs

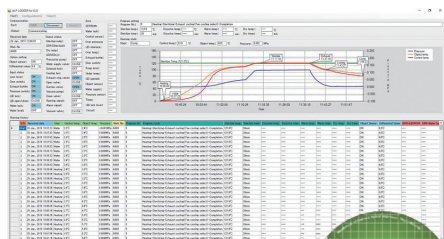
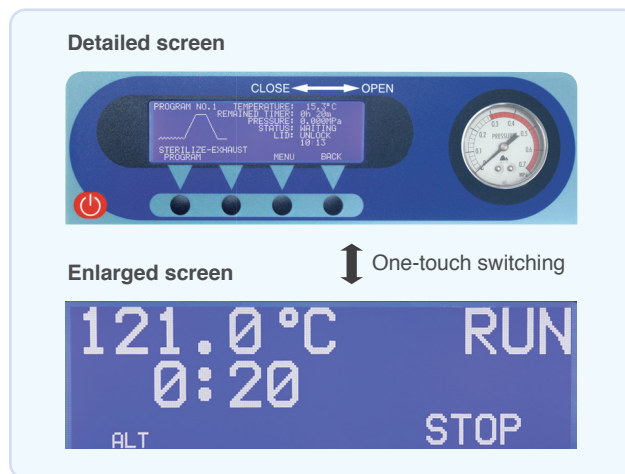
In addition to five prescribed programs depending on the load such as LIQUID, SOLIDS, and WASTE, etc. you can set the sterilization temperature, time, and cooling method to save and invoke them up to ten memories.

Interactive Liquid Crystal Display

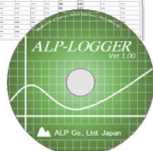
The settings etc. on an enlarged screen as shown below. One-touch switching between the detailed and enlarged screen.

Corresponds to IQ/OQ in GMP, GLP

We provide IQ/OQ documentations as an option.



•Please refer to page 15 for other options



MODEL	CLG-32L	CLG-40M	CLG-40L
Chamber size/volume	φ320×H660mm/62L	φ400×H660mm/97L	φ400×H820mm/117L
Outer dimension/weight	W550×D620×H990mm/71kg	W620×D720×H1000mm/88kg	W620×D720×H1160mm/95kg
Temperature(Max. press.)	100°C-140°C(0.270MPa)	100°C-137°C (0.250MPa)	
Sterilization time	0 minutes- 48 hours 00 minutes		
Dissolving temp./time	40°C-99°C / 0 minutes- 48 hours 00 minutes		
Warming temp./time	40°C-60°C / 0 minutes- 48 hours 00 minutes		
Safety device	Lid interlock, Lid opening/closing detection, Water lack prevention, Over temperature prevention, Over pressure prevention, Sensor breakage detection, Memory backup, Leakage breaker, Pressure safety valve		
Power demand	AC220/230/240V, 11/11/12A		AC220/230V/240V, 18/19/20A
Wire basket/quantity	φ300×300mm/2 pcs.	φ380×300mm/2 pcs.	φ380×400mm/2 pcs.

•Please specify voltage when you order.
•Specifications subject to change without notice for improvement.