

Multi Lab Clave CLG series

A premium model with a cycle similar to the steam-flush pressure-pulse (SFPP) for sterilizing challenging loads.



CLG-32L

Incorporates the parts not easily deteriorate over time

To avoid a running cost piling up due to the parts easily deteriorate over time, incorporates the lid gasket with steam resistant, the heater element made of stainless steel etc. so the parts last long time.

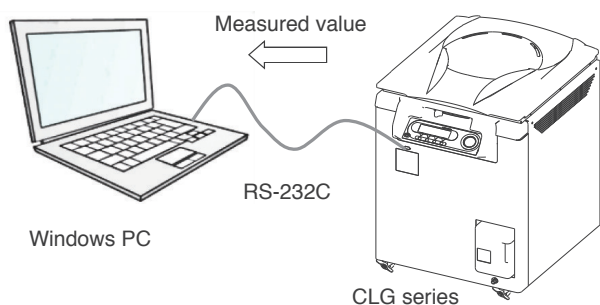
Rapid cooling fan as standard

Cools the loads after cycle to shorten the time until unloading.

Data logging system (Option)

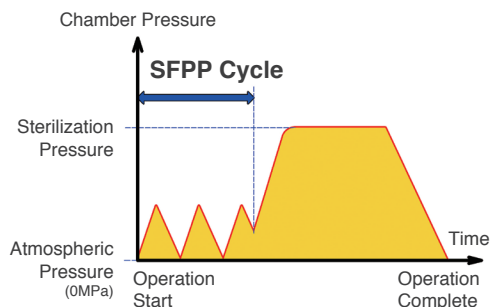
You can take the temperature, pressure, and time during operation into an optional software "ALP-LOGGER" by connecting between the unit and a PC.

The data are showed "Temperature (Pressure) - Time" diagram, can be printed, and exported to Microsoft Excel®.



Steam-flush pressure-pulse (SFPP)

Removes air from the load rapidly by repeatedly alternating a steam flush and a pressure pulse above atmospheric pressure. Optimum to sterilize challenging loads.



Available in plenty programs

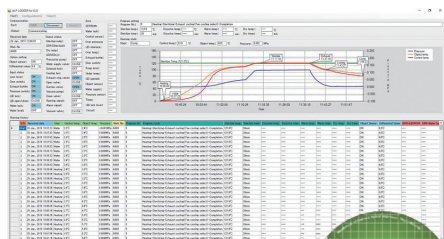
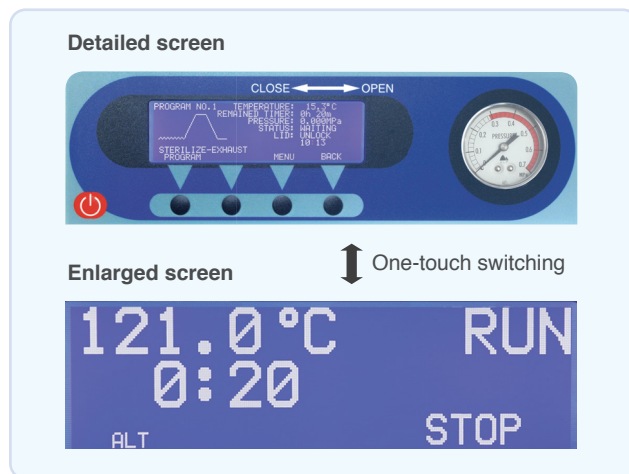
In addition to five prescribed programs depending on the load such as LIQUID, SOLIDS, and WASTE, etc. you can set the sterilization temperature, time, and cooling method to save and invoke them up to ten memories.

Interactive Liquid Crystal Display

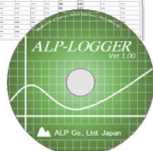
The settings etc. on an enlarged screen as shown below. One-touch switching between the detailed and enlarged screen.

Corresponds to IQ/OQ in GMP, GLP

We provide IQ/OQ documentations as an option.



•Please refer to page 15 for other options



MODEL	CLG-32L	CLG-40M	CLG-40L
Chamber size/volume	φ320×H660mm/62L	φ400×H660mm/97L	φ400×H820mm/117L
Outer dimension/weight	W550×D620×H990mm/71kg	W620×D720×H1000mm/88kg	W620×D720×H1160mm/95kg
Temperature(Max. press.)	100°C-140°C(0.270MPa)	100°C-137°C (0.250MPa)	
Sterilization time	0 minutes- 48 hours 00 minutes		
Dissolving temp./time	40°C-99°C / 0 minutes- 48 hours 00 minutes		
Warming temp./time	40°C-60°C / 0 minutes- 48 hours 00 minutes		
Safety device	Lid interlock, Lid opening/closing detection, Water lack prevention, Over temperature prevention, Over pressure prevention, Sensor breakage detection, Memory backup, Leakage breaker, Pressure safety valve		
Power demand	AC220/230/240V, 11/11/12A		AC220/230V/240V, 18/19/20A
Wire basket/quantity	φ300×300mm/2 pcs.	φ380×300mm/2 pcs.	φ380×400mm/2 pcs.

•Please specify voltage when you order.
•Specifications subject to change without notice for improvement.

High-end Lab Clave CLG-DVP series

A flagship model ! Pre & Post-vacuum laboratory autoclave equivalent to EN13060 Class B unit. Sterilizes any load type securely.



CLG-40MDVP

Pre-vacuum to deliver a secure sterilization.

Air is removed from the chamber and loads by a vacuum pump eliminating air pockets to penetrate steam into the loads particularly a hollow tubular item and porous medium such as clothing every corner, letting its heat penetrability improved, delivering a secure sterilization.

Post-vacuum drying system

The heater dries up wetted loads under a vacuum the vacuum pump creates where the wetness evaporates quickly. You can dry up efficiently even a hollow tubular item and clothing.

Available in six programs according to the loads

You can select six programs according to the loads and application such as LIQUID"OPENED", LIQUID" CLOSED", SOLIDS, WASTE, DISSOLUTION, ADD DRYING. Moreover, ten memories are incorporated so you can select the sterilization temperature and time, drying or not, and cooling method.

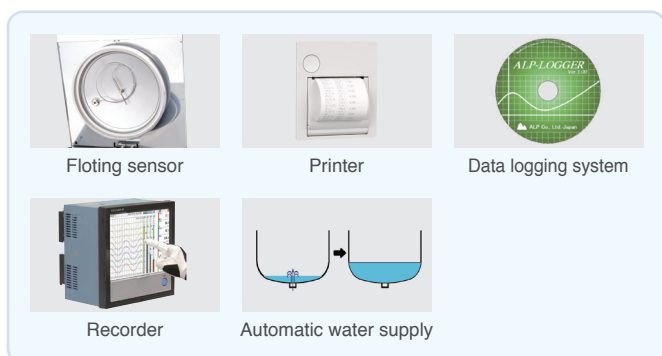
Corresponds to also no water facility (Option)

It is necessary water supply and drainage facility, but if you do not have it, we will prepare the one not require them for a fee. (Needs to be discussed)

Corresponds to IQ/OQ in GMP, GLP

We provide IQ/OQ documentations as an option.

◆ Options



Floating sensor

Printer

Data logging system

Recorder

Automatic water supply

◆Please refer to page 15 for other options

◆ Examples of application (sterilization, drying, or evaluation test)



Jar fermenter



Dust-free garments, Masks



Evaluation Test



Liquid in a sealed vessel

MODEL	CLG-32LDVP	CLG-40MDVP	CLG-40LDVP
Chamber size/volume	φ320×H660mm/62L	φ400×H660mm/97L	φ400×H820mm/117L
Outer dimension/weight	W550×D720×H990mm/109kg	W620×D820×H1000mm/127kg	W620×D820×H1160mm/133kg
Temperature(Max. press.)	100°C-140°C (0.270MPa)	100°C-137°C (0.250MPa)	
Sterilization time	0 minutes- 48 hours 00 minutes		
Drying temp./time	60°C-150°C / 0 minutes- 100 hours 00 minutes		
Dissolving temp./time	40°C-99°C / 0 minutes- 48 hours 00 minutes		
Warming temp./time	40°C-60°C / 0 minutes- 48 hours 00 minutes		
Safety device	Lid interlock, Lid opening/closing detection, Water lack prevention, Over temperature prevention, Over pressure prevention, Sensor breakage detection, Memory backup, Leakage breaker, Pressure safety valve, Vacuum pump protection circuit		
Power demand	AC220/230/240V, 14/14/15A	AC220/230V/240A, 21/21/22A	
Wire basket/quantity	φ300×300mm/2 pcs.	φ380×300mm/2 pcs.	φ380×400mm/2 pcs.

◆Please specify voltage when you order.

◆Specifications subject to change without notice for improvement.